

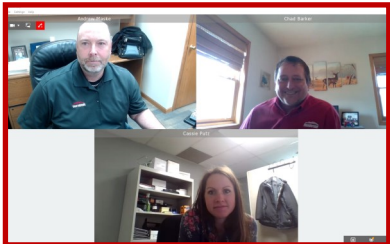
Adjusting to Change

An Internal Communication

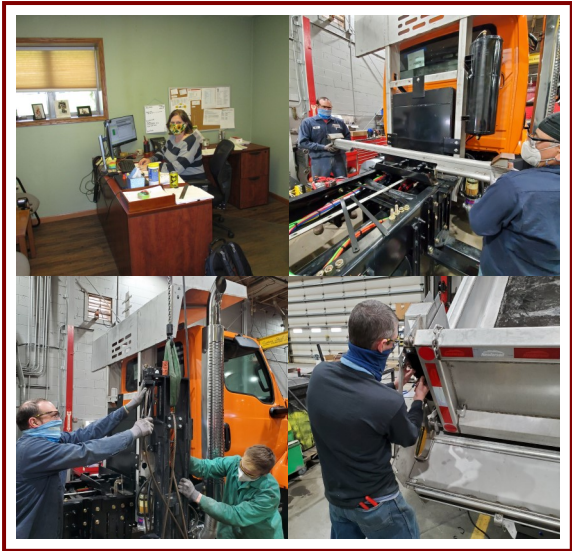


Adjusting to change

The pictures above and below show how we continue to adjust to change to ensure a safe and healthy work environment.

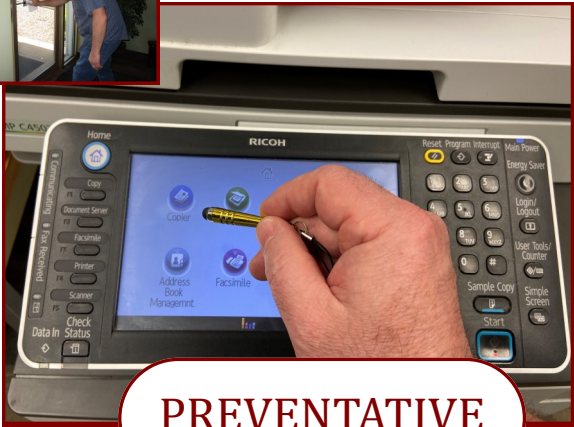


"Seeing myself on video took some getting used to."



New Environment

The choices we make can positively impact others around us. Continue to be aware and respectful.



PREVENTATIVE

You should be receiving new stylus's to prevent you from needing to touch common areas such as microwaves and printer buttons. Cleaning common areas is everyone's responsibility!



How to work in close proximity to each other in this changing environment.

Today's Focus

- Adjusting to Change
- New Environment
- Taking Preventative Measures
- Personal Responsibility
- Do it for the sake of others!